

Rubine™ & atlantic

Indulge in the Aqua Lifestyle

Rubine™
atlantic



 **O'Pro**
TECHNOLOGY

+50% tank lifetime



ENERGY
SAVING



FAST
HEATING



DIAMOND
ENAMEL TANK

7

YEARS
WARRANTY*

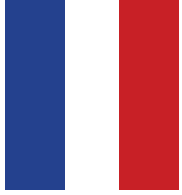


reddot winner 2021

PARIS

Storage Water Heater

15L & 30L



BRAND COLLABORATION

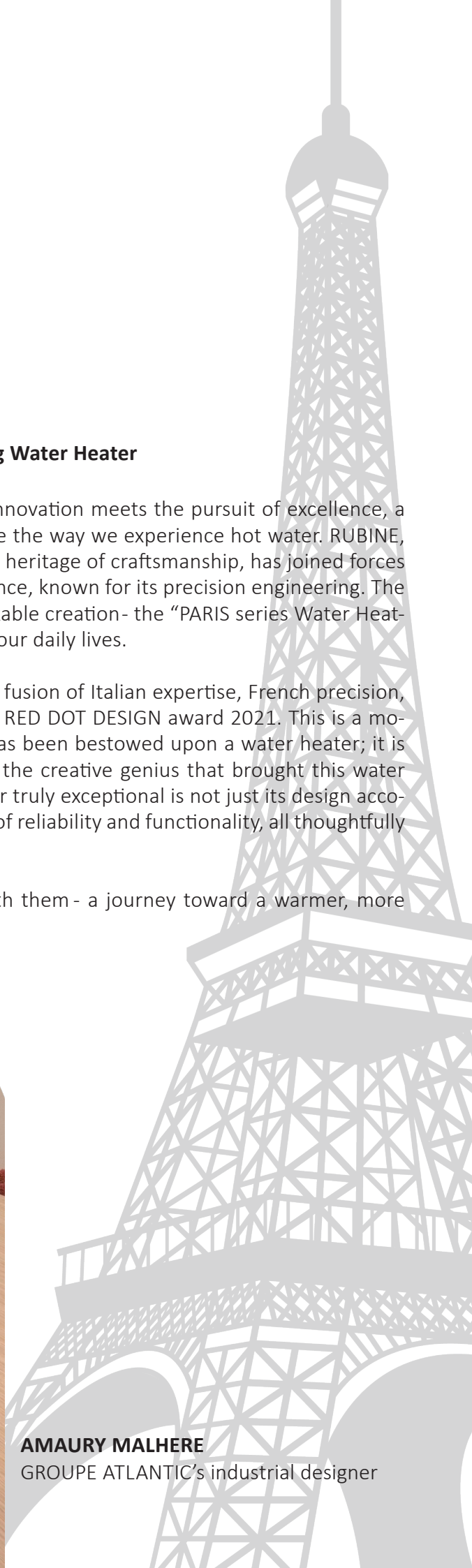
A 120 year water heater experiences

A Fusion of Excellence: Rubine and Atlantic's Award-Winning Water Heater

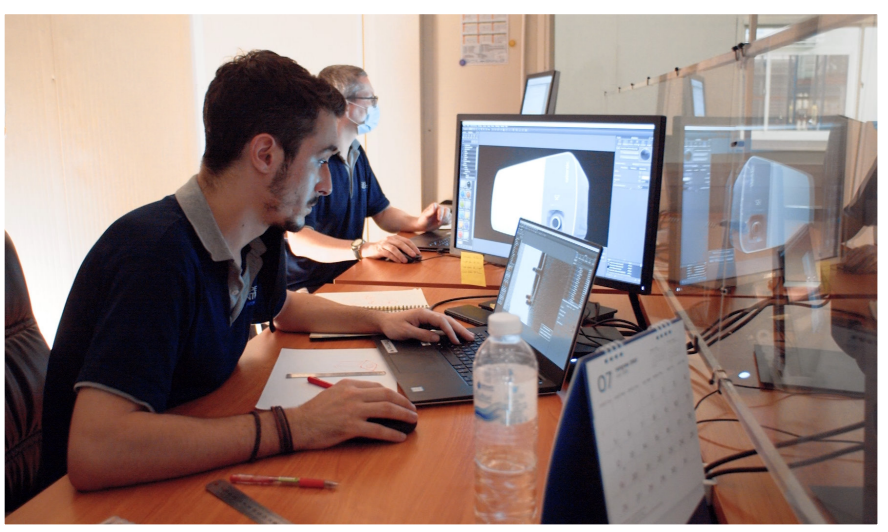
In the heart of the dynamic home appliance market, where innovation meets the pursuit of excellence, a groundbreaking partnership has emerged, destined to reshape the way we experience hot water. RUBINE, the renowned water heater brand in Singapore, with its Italian heritage of craftsmanship, has joined forces with ATLANTIC, the No. 1 water heater manufacturer from France, known for its precision engineering. The synergy of these two powerhouses has given birth to a remarkable creation- the "PARIS series Water Heater," designed to revolutionize the way we embrace warmth in our daily lives.

The "Paris Series Water Heater," meticulously crafted with the fusion of Italian expertise, French precision, and Singaporean ingenuity, has been awarded the prestigious RED DOT DESIGN award 2021. This is a momentous milestone, marking the first time such recognition has been bestowed upon a water heater; it is a symbol of unmatched excellence in design, a testament to the creative genius that brought this water heater to life. But what makes this award-winning water heater truly exceptional is not just its design accolade; it's the promise it holds. It embodies the perfect balance of reliability and functionality, all thoughtfully conceived to blend seamlessly into any modern home.

Rubine and Atlantic invite you to embark on this journey with them - a journey toward a warmer, more comfortable tomorrow with the "Paris Series Water Heater."



AMAURY MALHERE
GROUPE ATLANTIC's industrial designer



INNOVATION HUB

Our R&D Department serves as the epicenter of innovation, where ideas are cultivated, and breakthroughs are born. We are not just in the business of creating water heaters; we are in the business of redefining how the world experiences comfort and efficiency.

OVERLAPPING WELDING

Overlapping welding provides enhanced joint strength and durability by ensuring continuous and uniform fusion between adjacent weld beads.

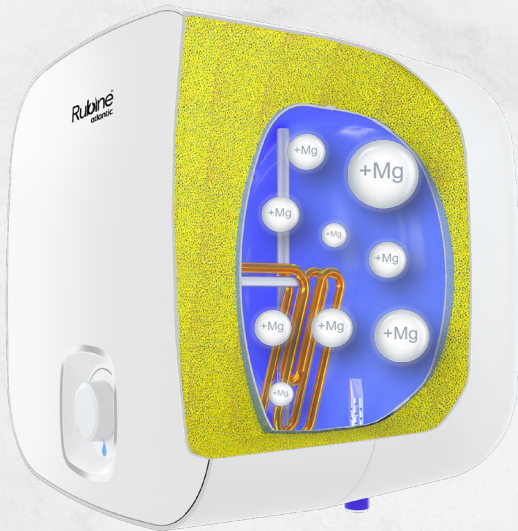


TITANIUM ENAMEL TANK DIAMOND QUALITY GLASS LINING

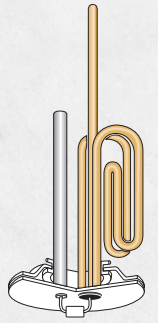
The Titanium Enamel Tank with Diamond quality glass lining ensures superior durability and corrosion resistance, extending the lifespan of the storage water heater.



The **No.1** Water Heater
in France.



O'Pro
TECHNOLOGY



**EXCLUSIVE
ANTI-CORROSIVE SYSTEM**

O'Pro technology uses an ohmic protection to balance out the electric potential of both the tank and the heating element. This extends the life of the magnesium anode as well as increasing protection against corrosion.

+50% TANK LIFE

The magnesium anode focuses on protecting the tank lining and the heating element together. The use of the O'Pro doubles the lifetime of the anode.

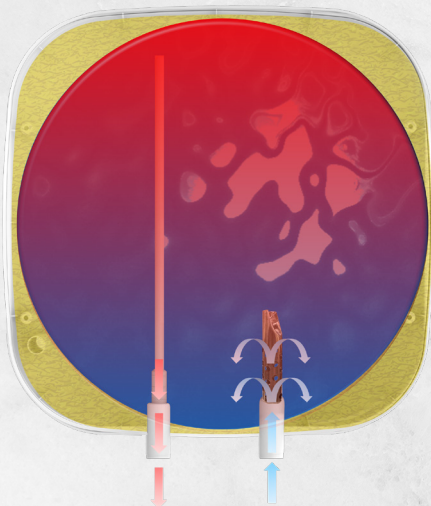
MG ANODE AFTER 1 YEAR USE



**Without
O'Pro**



**With
O'Pro**



STAINLESS STEEL OUTLET

OPTIMISED INLET DIFFUSER

**OPTIMISED INLET DIFFUSER &
STAINLESS STEEL OUTLET**

The Optimised Inlet Diffuser ensures consistent hot water delivery, coupled with improved leak resistance and enhanced resistance to stresses and pressures for reliable performance. The stainless steel outlet offers corrosion resistance, ensuring clean and safe water for consumption, while providing stable and reliable performance.

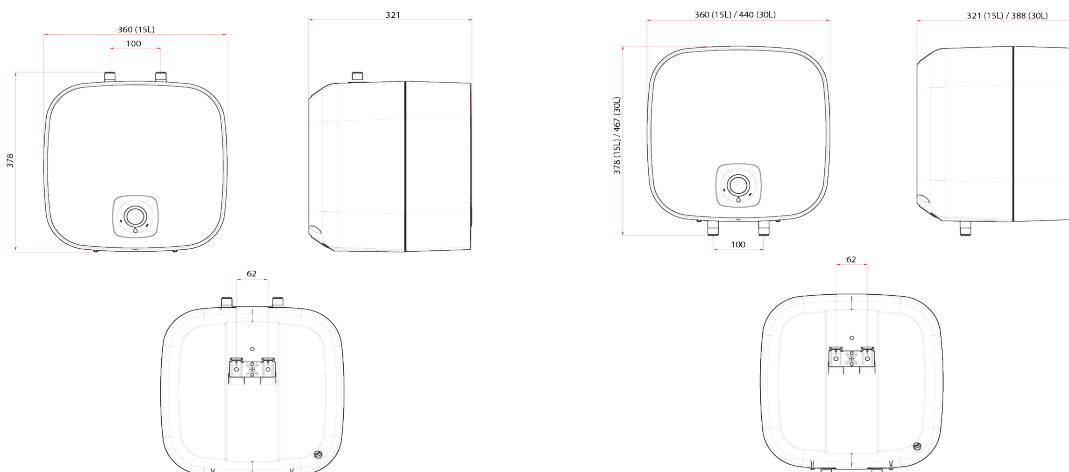
**HIGH-DENSITY, 0% CFC
POLYURETHANE FOAM**

High-density, 0% CFC polyurethane foam is employed to provide superior insulation, thereby boosting both energy efficiency and environmental friendliness.





Product Information			
Model	RA 15U SIN 2.5	RA 15 SIN 2.5	RA 30 SIN 2.5
Capacity	15L	15L	30L
Installation	Under-sink	Above-sink	Above-sink
Rated Power	2500W		
Rated Voltage	220V~240V		
Rated Frequency	50Hz/60Hz		
Heating Time ($\Delta T=35^{\circ}\text{C}$)	0h 15min	0h 15min	0h 30min
Max. Working Temperature	75°C		
Max. Working Pressure	0.80MPa		
Net Weight	8.0kg	8.0kg	11.8kg
Dimension (mm)	378 x 360 x 321	378 x 360 x 321	467 x 440 x 388
Colour	Black / White		
Safety Mark	230767-11	230766-11	230765-11
Waterproof IP Rating	IPX4		
Package Included	Water Heater + Pressure Relief Valve + Mounting Hardware + Flexible Hose		
Warranty (T&C's Apply)	1 Year Parts + Service / 5 Years Heating Element / 7 Years Inner Tank		



*Copyright. All Rights Reserved. Rubine is constantly improving its products and make changes if deemed necessary.



rubine.it



rubine_sg



rubineitaly



Video