

Rubione™
Indulge in the Aqua Lifestyle

POWER

HEATER

OFF

MAX

GOGO 933P

INSTANT WATER HEATER



With rich experience of 20 years in the water heating industry, Rubine unveils its 9th edition of instant water heater, a sleek beauty of true simplicity, the GOGO 933 series. It is an ideal hot water solution for your apartment, delivering an endless supply of hot water instantly when you need it. Designed in black and white, it comes with a matching 3-spray slim shower, sliding rail, and soap dish. Quality is also assured with a 5-year warranty on its heating element and water tank. Go with GOGO, your intimate shower companion

Rubine GOGO 933 series of instant water heaters have a very successful story since its debut in the market 2 years ago. Its sleek design and proven performance track record have made it one of the top sales water heaters in the market. To continue with this glory and our initiative of an affordable hot shower for every home, our engineer has incorporated a silent inverter DC pump into this heater. Now, with GOGO 933P, there is no compromise of comfort even if you have low incoming water pressure. Go with GOGO, love your shower, love your heater.



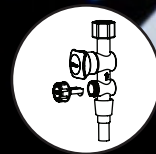
Low noise
inverted DC pump



Independent
thermo cut-out



UK technology
heating element



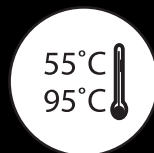
3-in-1
compact valve



Built-in auto
water flow sensor



Nylon glass
fibre tank



Anti-scalding
protection



Splash-proof
standard



ON

PUMP

SILENT

INVERTER

OFF



LOW NOISE INVERTER DC PUMP

Technology is constantly evolving and the use of an inverter DC pump by Rubine in its water heater is a breakthrough in the industry. This brushless motor is quiet in operation - <45db, has a longer life span, and save up to 55% more energy. Moreover, DC pump uses magnet so it is more efficient and requires little maintenance.

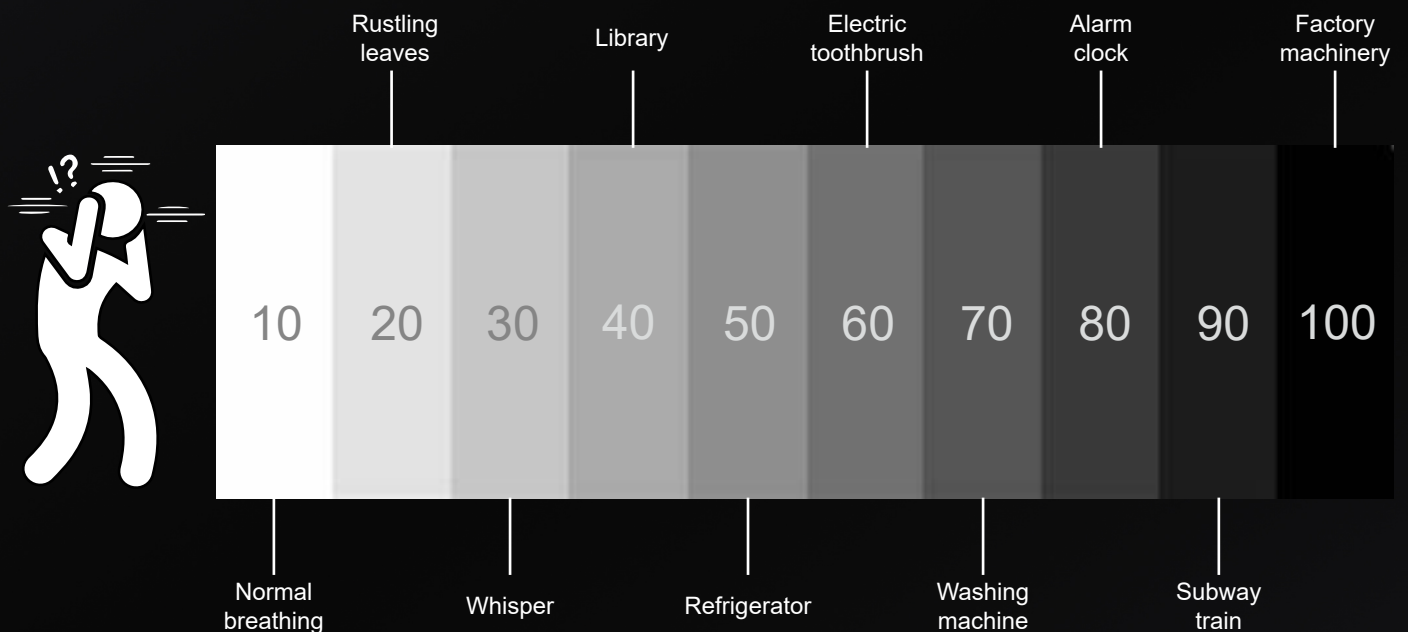


Without pump



With pump

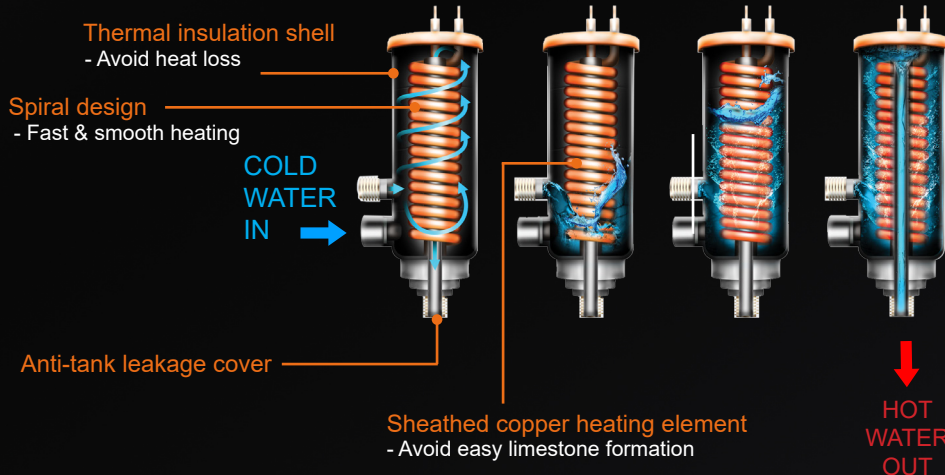
Average Decibels (dB)





COMPACT WATER FILTER & STOP VALVE

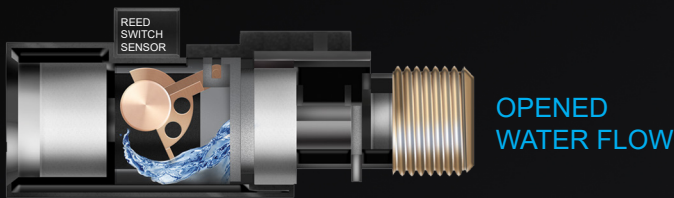
Equipped with a superior quality stop valve with built-in water filter to ensure better flow efficiency and filters out water particles.



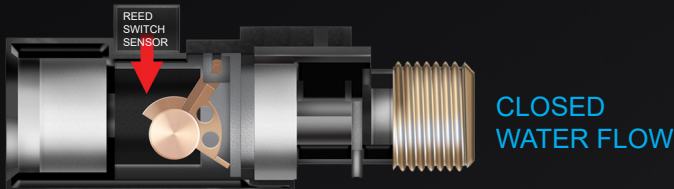
UL-APPROVED HIGH QUALITY UK TECHNOLOGY HEATING ELEMENT



Ensuring peace of mind with quality and reliable UL-approved heating element.



1) When power is on and water flows into the heater, the magnetic pistol will activate the Reed Switch Sensor to automatically turn on the water heater.



2) When water flow stops, the magnetic pistol will automatically de-activate from the Reed Switch Sensor and turns off the heater.

BUILT-IN ADVANCED AUTOMATIC FLOW DESIGN

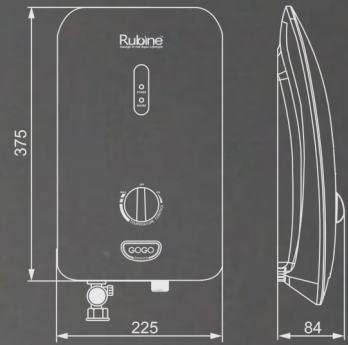
Prevent dryburn by automatically detects sufficient water pressure to operate.



RWH-933B



RWH-933W



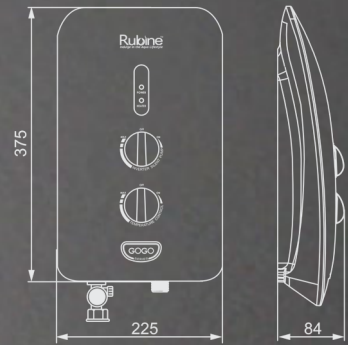
RWH-933



RWH-933PB



RWH-933PW



RWH-933P



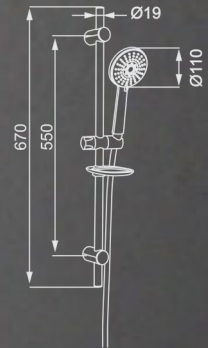
Rain + Massage



Rain



Massage



Handshower

Product Information		
Model	RWH-933	RWH-933P
Type of Pump	Nil	DC pump
Available Colour	Black / White	
Rated Power	3300W	3500W
Rated Voltage	230V	
Rated Frequency	50Hz/60Hz	
Working Pressure	0.02MPa (Min.) / 0.4MPa (Max.)	
Min. Flow Rate	2L/min	
Heater Dimension	375 (H) x 225(W) x 84 (D)	
Net Weight	1.3kg	1.5kg
COC Safety	190236-11	211065-11
Waterproof IP Rating	IP25	
No. of spray	3 (Handshower)	
Package Included	Water Heater + Handshower Set + Mounting Hardware	



www.rubine.it

