

RubineTM
Indulge in the Aqua Lifestyle

SPACE SERIES





COMPANY PROFILE

Established more than 15 years ago, Rubine is a leading Italian brand that has built a strong presence in many markets, including Singapore and Malaysia and has provided reliable hot water solutions to more than 100,000 households.

As one of the leaders in the bathroom & kitchen industry, Rubine has made continuous effort to set high quality, standard & service by investing in premium facilities & R&D with our elite technical researchers with the aim to improve our customer experiences and maximize their satisfactions.

Our new electric water heater, SPACE series, epitomize this twofold mission. One of the most notable features is the Blue Diamond Enamel Coating, achieved thru an advanced electrostatic technology that makes the inner tank of the

heater exceptionally shock and corrosion resistance; while also improving the purity of the water. The ultimate result is not only a water heater of outstanding quality & reliability, but also one with a purer & safer source of hot water.

In this latest series of water heater, it is also designed for easy installation and available in a comprehensive range from 20 to 100 litres in slim body of horizontal mounting position that can fit into a low ceiling bathroom. Each model is intensively tested and adhered to the strictest safety standard and carries a 5 year warranty on the inner tank.

With this safe, efficient and reliable water heater installed in your homes, everyone in family will be assured of a pleasant, refreshing and comfortable showering experience.

SPACE Series

Electric Storage Water Heater

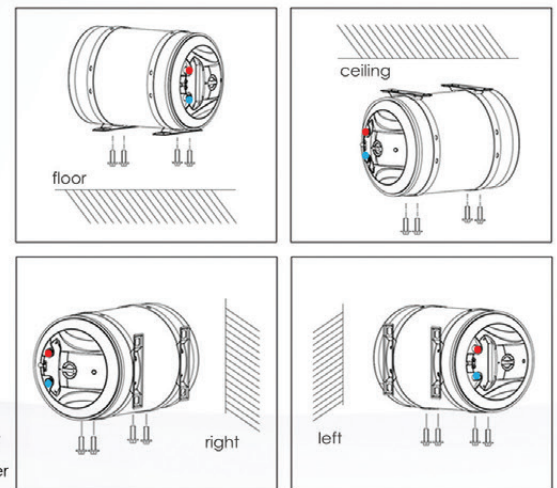
20/30/40/50/56/80/100 litres 3kW



SPACE series, the latest collection of RUBINE electric water heater, are designed to offer ideal hot water solution to your home. With its slim horizontal body & unique side pipe connections, the heater can be easily concealed inside the ceiling or install high up in your bathroom; this resulted in great space-saving. Installation is made easy too with our multi-position ring bracket, it allows the heater to hang on the wall or ceiling or sitting on the floor. The heaters are equipped with a high power 3kW stainless steel heating element, the waiting time for hot water will be shorten and insulated by a thick layer of high density polyurethane foam which guarantees excellent heat retention and a lower energy consumption. Available in a few capacities, range from 20 to 100 litres..

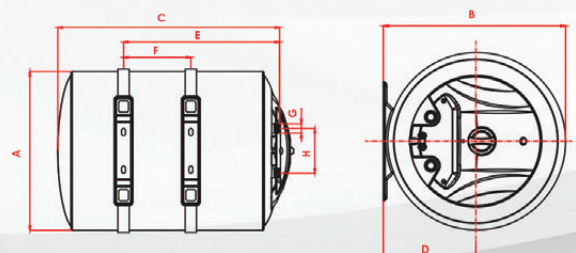
Multi-Position Mounting

Its multi-position ring bracket allows flexible installation. The heater can be mounted Left or Right on the wall, ceiling or floor.



Technical Data							
Models	SPH 20S SIN 3.0	SPH 30S SIN 3.0	SPH 40S SIN 3.0	SPH 56S SIN 3.0	SPH 50B SIN 3.0	SPH 80B SIN 3.0	SPH 100B SIN 3.0
Capacity (L)	20	30	40	56	50	80	100
Rated Power (W)	3000	3000	3000	3000	3000	3000	3000
Rated Voltage (V)	230	230	230	230	230	230	230
Rated Pressure (kPa)	0.80	0.80	0.80	0.80	0.80	0.80	0.80
Max.WaterTemperature (°C)	75	75	75	75	75	75	75
Heating Time (ΔT30°C)	16.6'	22.4'	30'	45'	37'	60'	1.25h
Waterproof Grade	IPX4	IPX4	IPX4	IPX4	IPX4	IPX4	IPX4
Net Weight (Kg)	8.6	11.3	13.5	18.5	15.3	21.1	26.5
COC Number	160891-11	160892-11	160893-11	160890-11	160896-11	160895-11	160894-11

Product Dimensions								
Capacity (L)	20	30	40	56	50	80	100	
Dimensions (mm)	A	ø355	ø355	ø355	ø355	ø440	ø440	ø440
	B	375	375	375	375	460	460	460
	C	397	495	610	840	535	755	905
	D	190	190	190	190	235	235	235
	E	258	338	440	625	360	580	730
	F	70	150	250	400	150	300	450
	G	G 1/2"	G 1/2"	G 1/2"	G 1/2"	G 1/2"	G 1/2"	G 1/2"
	H	100	100	100	100	100	100	100



Big Diameter - 50/80/100 litres



Capacity - 100 Litres
SPH 100B SIN 3.0 (l)



Capacity - 80 Litres
SPH 80B SIN 3.0 (l)



Capacity - 50 Litres
SPH 50B SIN 3.0 (l)

Small Diameter - 20/30/40/56 litres



Capacity - 56 Litres
SPH 56S SIN 3.0 (l)



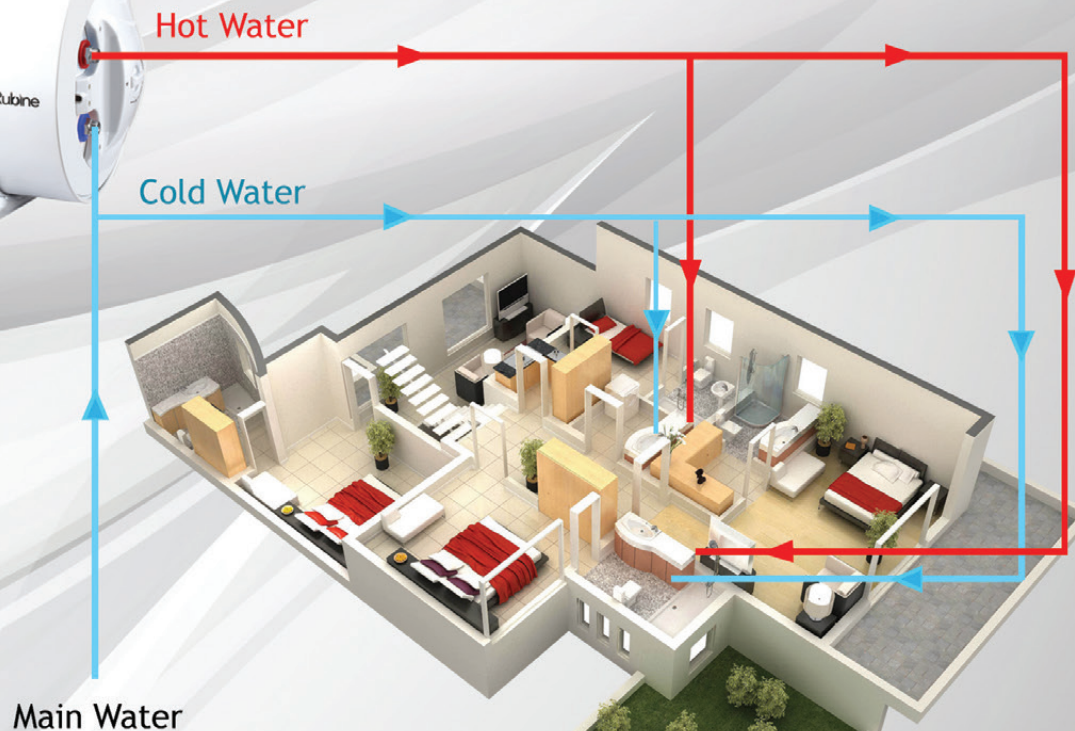
Capacity - 40 Litres
SPH 40S SIN 3.0 (l)



Capacity - 30 Litres
SPH 30S SIN 3.0 (l)



Capacity - 20 Litres
SPH 20S SIN 3.0 (l)



Multi Point Hot Water Supply

Main Features



Blue Diamond Enamel Coating

- * Corrosion resistance and anti-shock
- * Free from scaling or peeling off
- * Tested at high pressure and ensure a longer tank life



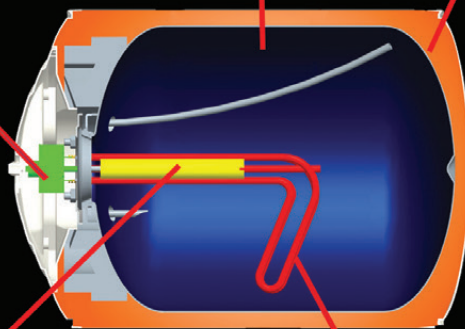
Precise & Reliable Thermostat with Built-in Thermal Cut Out

- * Automatic On/Off & conserve electricity
- * Prevention of over heating
- * Ensure safety and reliability



High Density Polyurethane Insulation

- * Better capacity in heat preservation
- * Keep the water warm and prevent heat loss for long time
- * Effective energy saving



Magnesium Anode

- * Protect the enameled inner tank and ensure longer life span



Multi-position Ring Bracket

- * Easy and flexible installation
- * Ring bracket allows hassle-free installation in a variety of mounting positions



Multi-functions Safety Valve

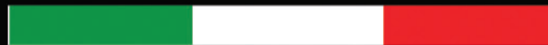
- * Prevention of over pressure: release when pressure is over rated
- * Prevention of vacuum: block water reverting into inlet pipe
- * Drainage pipe: releasing expanded water



Stainless Steel Heating Element

- * Made of Stainless steel 316
- * Ultra long life and durable against dry heating
- * High efficient and quality heating element

www.rubine.it



Rubine S.r.l
Via Ponchielli 26
10024 Moncalieri
Torino/Italy
Email: enquiries@rubine.it
[Facebook.com/rubineitaly](https://www.facebook.com/rubineitaly)

Marketed by:
Casa (S) Pte Ltd
15 Kian Teck Crescent
Singapore 628884
T: (+65) 62680066
F: (+65) 62668069
<http://www.casaholdings.com.sg>